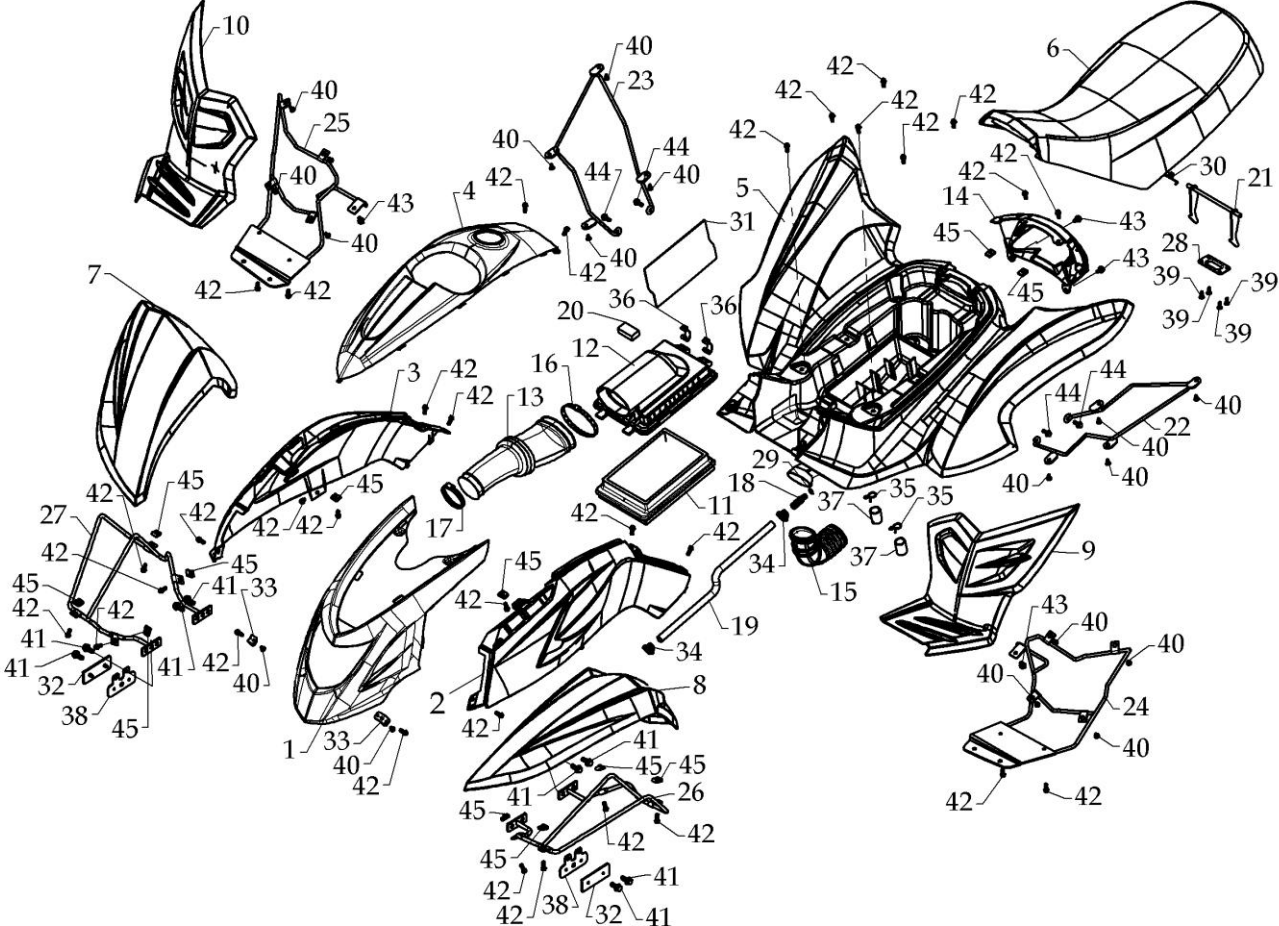


D1027-011A

**ENGINE**

<b>Model</b>	<b>Item</b>	<b>Part no</b>	<b>Description</b>	<b>Specification</b>	<b>Quantity</b>	<b>Excl. moms</b>	<b>Inkl. moms</b>
	01	E140000-01	E14 ENGINE	450C.C.	1	17820,00	22275,00

FENDER SEAT



D1027-021A

## FENDER SEAT

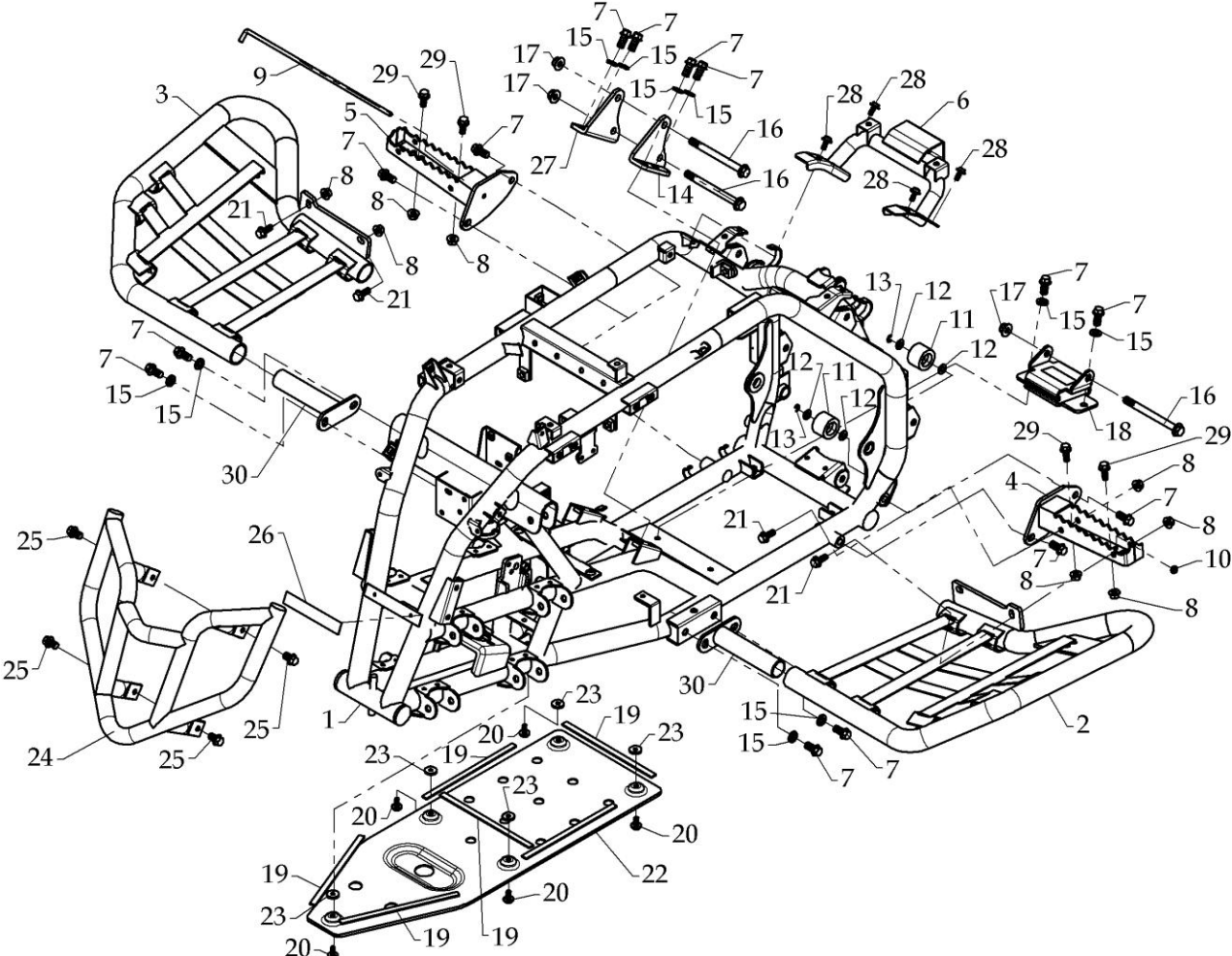
Model	Item	Part no	Description	Specification	Quantity	Excl. moms	Inkl. moms
	01	F150195-98	COVER, HEADLIGHT		1	330,00	412,50
	02	F150092-98	LEFT COVER, FRONT FENDER		1	225,00	281,25
	03	F150093-98	RIGHT COVER, FRONT FENDER		1	225,00	281,25
	04	F150194-98	FUEL TANK COVER		1		
	05	F150090-98	REAR FENDER		1	918,00	1147,50
	06	F150089A98	SEAT		1	637,20	796,50
	07	F150100-98	LEFT FRONT LEFT FENDER		1	297,00	371,25
	08	F150101-98	RIGHT FRONT RIGHT FENDER		1	297,00	371,25
	09	F150096A15	FOOTBOARD		1	270,00	337,50
	10	F150097A15	FOOTBOARD		1	270,00	337,50
	11	F150182B00	FILER ELEMENT, FOAM		1	330,00	412,50
	12	F150083-15	AIR BOX COVER		1	120,00	150,00
	13	F150085A00	INTAKE DUCT, CARBURETOR		1	135,00	168,75
	14	F150157-98	COVER, TAIL LIGHT		1	81,00	101,25
	15	F150122A00	INTAKE DUCT, AIRCLEANER		1	99,00	123,75
	16	F150121-41	CLAMP		1	20,70	25,88
	17	F150123-41	CLAMP		1	18,00	22,50
	18	F150126A00	CONNECTOR		1	39,00	48,75
	19	F150128A01	HOSE	Ø17×Ø12,NBR+PVC	1	128,40	160,50
	20	F150131-00	ELEMENT		1	7,50	9,38
	21	F150149-42	SEAT FIXED HOOK		1	69,00	86,25
	22	F150191A50	REAR FENDER BRACKET		1	381,00	476,25
	23	F150192A50	REAR FENDER BRACKET		1	381,00	476,25
	24	F150221-50	FOOT BOARD BRACKET		1		
	25	F150222-50	FOOT BOARD BRACKET		1		
	26	F150228-50	FRONT LEFT FENDER BRACKET		1	330,00	412,50
	27	F150229-50	FRONT RIGHT FENDER BRACKET		1	330,00	412,50
	28	F030021-42	PLATE, SEAT HOOK		1	14,40	18,00



**FENDER SEAT**

<b>Model</b>	<b>Item</b>	<b>Part no</b>	<b>Description</b>	<b>Specification</b>	<b>Quantity</b>	<b>Excl. moms</b>	<b>Inkl. moms</b>
	29	A100015-43	CIRCLIP	Ø10	1	0,90	1,13
	30	A110043-00	TWIST SPRING		1	4,20	5,25
	31	F140197-00	HEAT INSULATE		1	42,90	53,63
	32	F020266-00	REFLECTER	Yellor,CE	2	26,40	33,00
	33	A230034-50	BRACKET		2	18,90	23,63
	34	F150127-41	CLAMP		2	7,80	9,75
	35	F150129-00	CLAMP		2	3,00	3,75
	36	F150169-41	CLIP		2	18,00	22,50
	37	F150130-00	DRAINAGE PLUG		2	7,50	9,38
	38	F150179A50	REFLECTER BRACKET		2	1,80	2,25
	39	A130005-43	TAPPING SCREW	5mm×16L	4	0,90	1,13
	40	A130018-43	TAPPING SCREW	5mm×12L	18	0,90	1,13
	41	A050049-41	HEXAGONAL FLANGE BOLT	M8×P1.25×16L	8	2,40	3,00
	42	A050023-41	HEX BOLT	M6×P1.0×16L	34	3,60	4,50
	43	A050017-41	HEXAGONAL FLANGE BOLT	M6×1.0×12L	4	1,50	1,88
	44	A050024-41	HEXAGONAL FLANGE BOLT	M6×P1.0×16L	4	2,10	2,63
	45	F020195-43	CLIP NUT	M6×1.0	12	5,40	6,75

FRONT FRAME



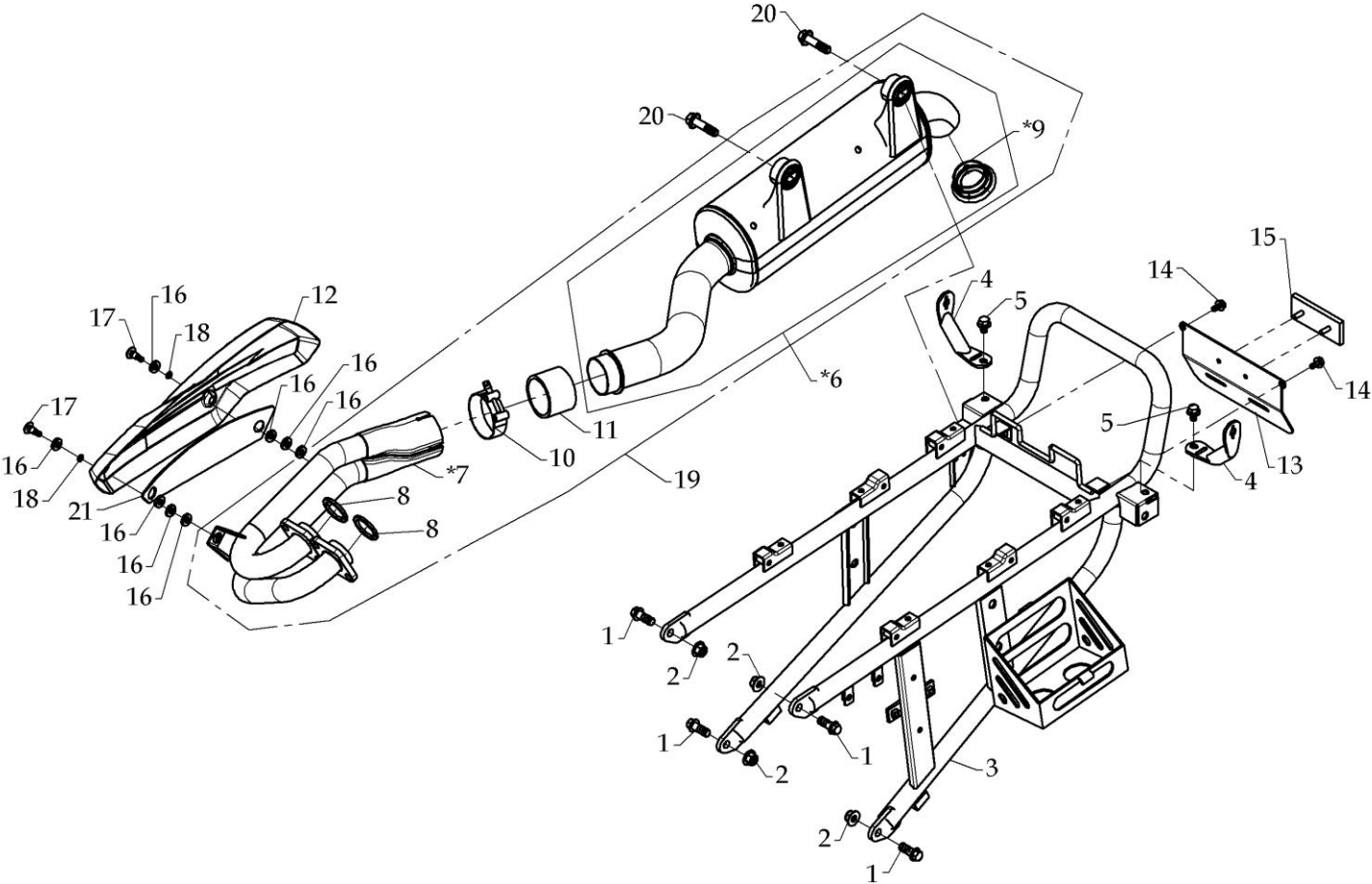
D1027-031A

## FRONT FRAME

Model	Item	Part no	Description	Specification	Quantity	Excl. moms	Inkl. moms
	01	F190048K48	FRAME		1		
	02	F150071-98	FOOT PROTECT NET BRACKET	LEFT	1		
	03	F150072-98	FOOT PROTECT NET BRACKET	RIGHT	1		
	04	F150075B48	FOOTREST	LEFT SIDE	1	255,00	318,75
	05	F150076B48	FOOTREST	RIGHT SIDE	1	255,00	318,75
	06	F150168A48	SEAT BRACKET		1	363,00	453,75
	07	A050109-41	HEXAGONAL FLANGE BOLT	M10×1.25×20L	14	5,70	7,13
	08	A060014-41	LOCK NUT	M8×1.25	8	3,90	4,88
	09	F150160-42	L-TYPE BOLT	M6×1.0	1	27,00	33,75
	10	A060053-41	LOCK NUT	M6×1.0	1	3,90	4,88
	11	F150132-00	CHAIN PASSIVE ROLLER		2	99,00	123,75
	12	A080095-41	PLAIN WASHER	Ø8.2×Ø16×1t	4	0,90	1,13
	13	A100014-43	E CLIP	Ø6	2	0,30	0,38
	14	F190045A50	LEFT ENGINE BRACKET		1	759,00	948,75
	15	A080009-41	SPRING WASHER	Ø10.2×Ø3.7×2.5t	10	0,90	1,13
	16	A050068A41	HEXAGONAL FLANGE BOLT	M10×1.25×115L	3	16,80	21,00
	17	A060007-41	LOCK NUT	M12×1.25	3	6,00	7,50
	18	F190044-50	ENGINE DAMPER		1	411,00	513,75
	19	F020096-00	DAMPER	EVA	6	2,10	2,63
	20	A050017-41	HEXAGONAL FLANGE BOLT	M6×1.0×12L	5	1,50	1,88
	21	A050084-41	HEXAGONAL FLANGE BOLT	M8×1.5×20L	4	3,60	4,50
	22	F150162B48	PROTECT PLATE		1	333,00	416,25
	23	A080102-00	RUBBER WASHER	Ø6×Ø19×3t	5	6,00	7,50
	24	F150087-98	BUMPER		1		
	25	A050005-41	HEXAGONAL FLANGE BOLT	M10×1.25×15L	4	4,20	5,25
	26	A990209A00	VIN PLATE	e3×2002/24×0337	1	28,50	35,63
	27	F190046A50	RIGHT ENGINE BRACKET		1	759,00	948,75
	28	A050023-41	HEXAGONAL FLANGE BOLT	M6×1.0×16L	4	3,60	4,50
	29	A050049-41	HEXAGONAL FLANGE BOLT	M8×1.25×16L	4	2,40	3,00
	30	F150240-41	BRACKET		2	174,00	217,50



REAR FRAME

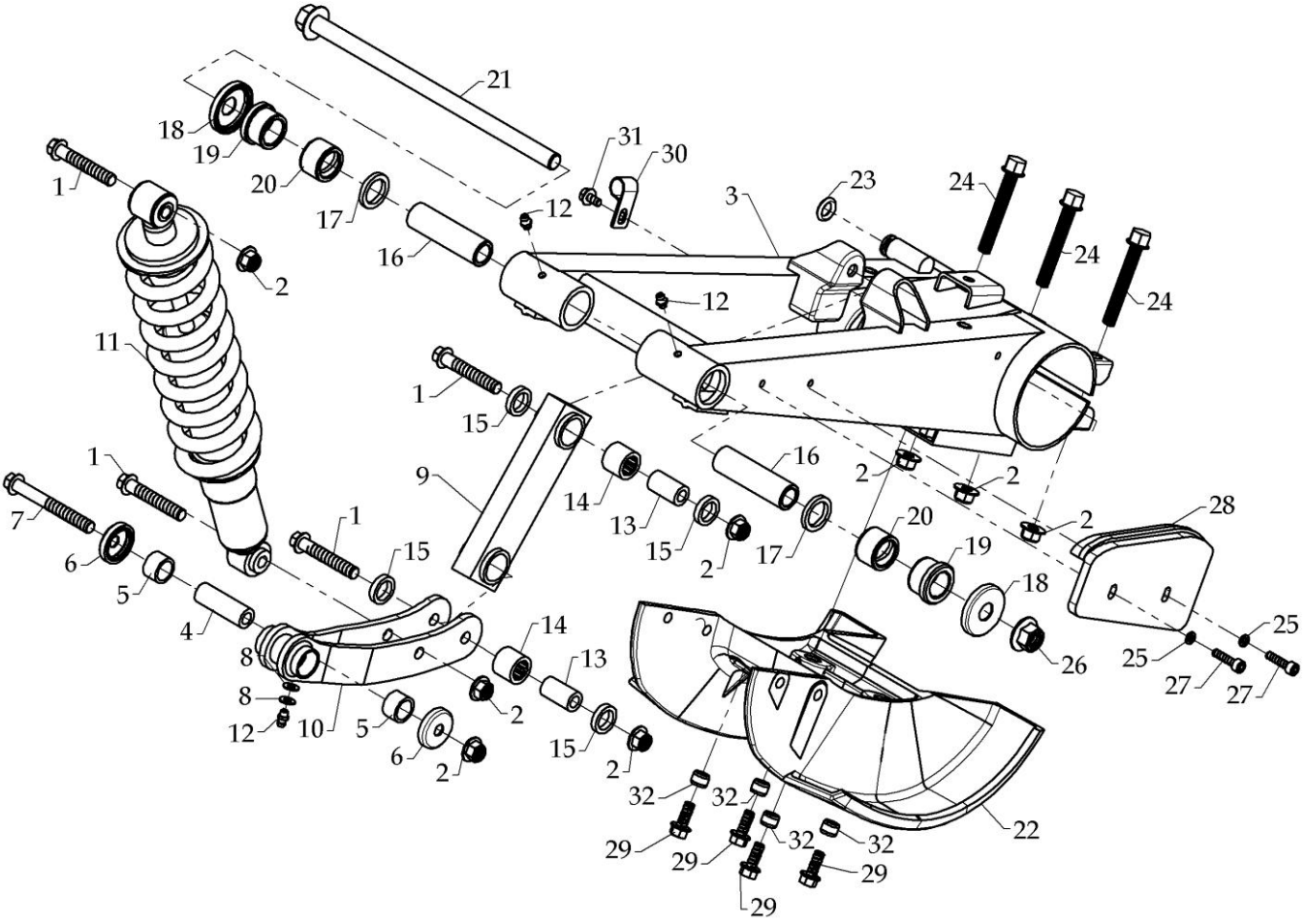


D1027-041A

**REAR FRAME**

<b>Model</b>	<b>Item</b>	<b>Part no</b>	<b>Description</b>	<b>Specification</b>	<b>Quantity</b>	<b>Excl. moms</b>	<b>Inkl. moms</b>
	01	A050201-41	HEXAGONAL FLANGE BOLT	M10×1.25×25L	4	6,00	7,50
	02	A060007-41	LOCK NUT	M10×1.25	4	6,00	7,50
	03	F150088C48	SUB FRAME		1	1836,00	2295,00
	04	F150196-50	BERACKET,DIRECTIONAL LIGHT		2	62,70	78,38
	05	A050020-41	HEXAGONAL FLANGE BOLT	M8×1.25×12L	2	2,40	3,00
	06	F150233-00	MUFFLER	STAINLESS STEEL	1		
	*	F150233-01	MUFFLER		1	1632,00	2040,00
	*	F150233-02	MUFFLER	CATALYST	1		
	07	F150232-00	EXHAUST PIPE	STAINLESS STEEL	1		
	*	F150232-01	EXHAUST PIPE		1	540,00	675,00
	08	F150082-00	GASKET CP,EX PIPE		2	15,00	18,75
	09	F150237-00	SPARK ARRESTER	STAINLESS STEEL	1		0,00
	*	F150237-01	SPARK ARRESTER		1	150,00	187,50
	10	F150180-00	CLAMP	Ø2 1/8"~Ø2 1/6"	1	105,00	131,25
	11	F150181-00	GHAPHITE RING	Ø60×Ø51×40L	1	225,00	281,25
	12	F150252-00	PROTECTIVE COVER		1	264,00	330,00
	13	F150154B50	LICENSE PLATE		1	49,50	61,88
	14	A050017-41	HEXAGONAL FLANGE BOLT	M6×1.0×12L	2	1,50	1,88
	15	F020265-00	REFLECTER	red,CE	1	26,40	33,00
	16	A080108-01	HEAT INSULATE WASHER	Ø7.8×Ø16×3t	8	5,40	6,75
	17	A050245-00	HEXAGONAL SOCKET BOLT	M6×1.0×21L	2	18,00	22,50
	18	A040042-00	O RING	P6-Ø1.9×Ø5.8	2	1,50	1,88
	19	F150230-98	EXHAUST PIPE ASSY		1		0,00
	20	A050001-41	HEXAGONAL FLANGE BOLT	M10×1.25×40L	2	7,80	9,75
	21	F150253-00	HEAT INSULATION PAD		1	102,00	127,50

SWING ARM SUB ASS'Y

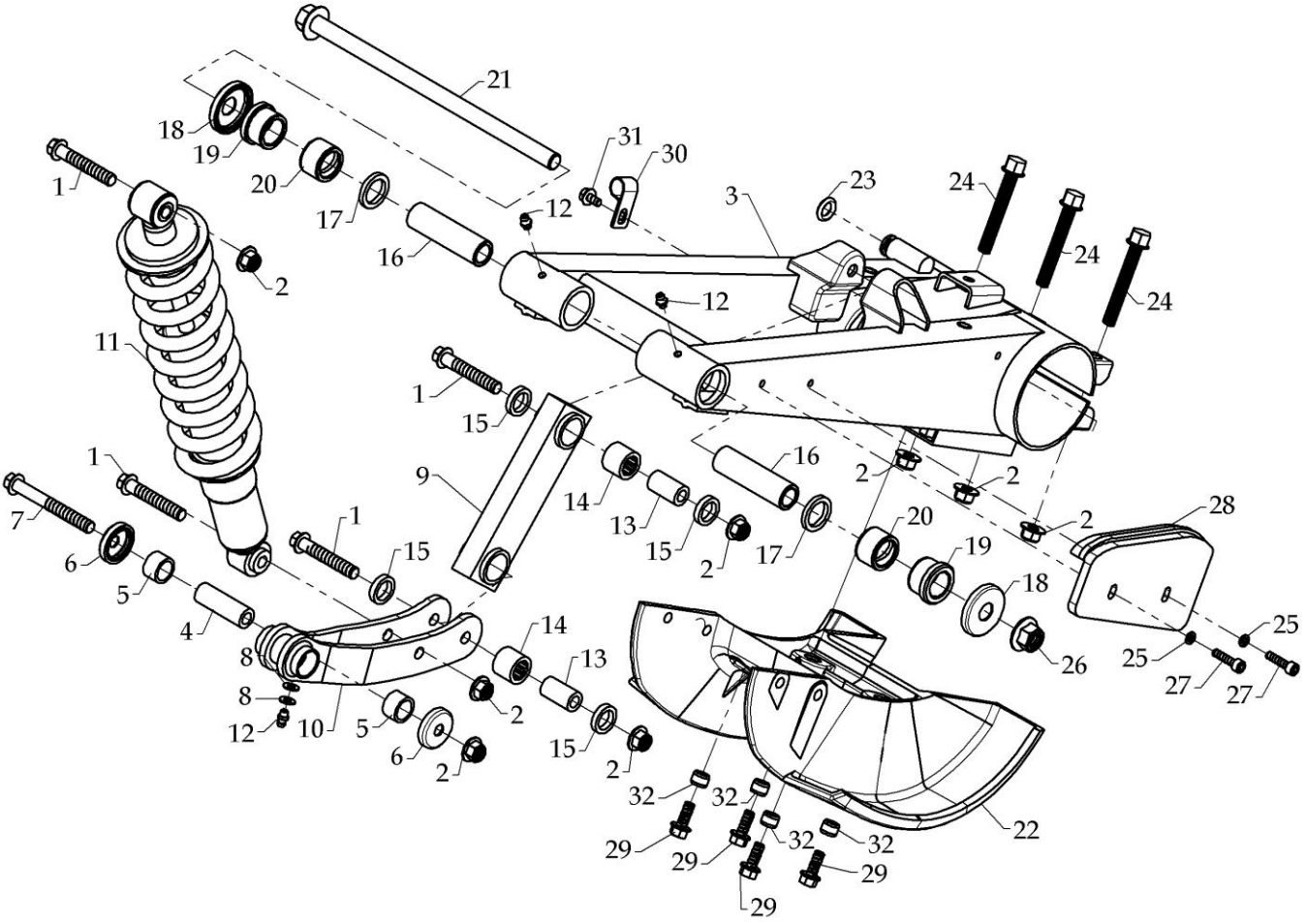


D1027-051A

**SWING ARM SUB ASS'Y**

<b>Model</b>	<b>Item</b>	<b>Part no</b>	<b>Description</b>	<b>Specification</b>	<b>Quantity</b>	<b>Excl. moms</b>	<b>Inkl. moms</b>
	01	A050230-41	HEXAGONAL FLANGE BOLT	M10×1.25×60L-10T	4	14,70	18,38
	02	A060007-41	INSERT LOCK NUT	M10×1.25	8	6,00	7,50
	03	F150024I48	SWING ARM		1	1224,00	1530,00
	04	A090024B00	SPACER	Ø10×Ø17×51.3L	1	25,80	32,25
	05	A020001-00	BUSH		2	14,10	17,63
	06	F090041-00	SEAL COVER	C901A4001	2	20,10	25,13
	07	A050229-41	HEXAGONAL FLANGE BOLT	M10×1.25×85L-10T	1	19,20	24,00
	08	A080036-41	PLAIN WASHER	Ø6.5×Ø13×1.0	2	0,60	0,75
	09	F190050-48	REAR LINKAGE		1	285,00	356,25
	10	F150142C48	FRONT LINKAGE		1	274,50	343,13
	11	F150043A00	REAR SUSPENSION		1	1692,00	2115,00
	12	F020140-00	GREASE VALVE		3	8,10	10,13
	13	A090023A00	SPACER	Ø10×Ø17×31L	2	19,20	24,00
	14	A010054-00	NEEDLE BEARING	TA1720,Ø24×Ø17×20t	2	124,80	156,00
	15	A030033-00	SEAL	VCØ24×Ø17×5t	4	7,20	9,00
	16	A090030-00	SPACER	Ø15.5×Ø22×77L	2	25,20	31,50
	17	A030030-00	SEAL	TC×4 22×30×4, OS-3704	2	9,60	12,00
	18	A030035-00	DUST COVER	Ø15.5×Ø34.2×Ø44×6.2t	2	16,20	20,25
	19	A020008-00	BUSHING		2	11,40	14,25
	20	A020009-00	BUSHING	Ø22×Ø30×20L	2	8,70	10,88
	21	A050187-41	HEXAGONAL FLANGE BOLT	M14×1.5L×274L	1	94,20	117,75
	22	F150109A00	PROTECTOR		1	284,10	355,13
	23	A040034-00	O RING	Ø12×4	1	2,40	3,00
	24	A050185-41	HEXAGONAL FLANGE BOLT	M10×1.25×70L	3	15,60	19,50
	25	A080026-41	PLAIN WASHER	Ø6.5×Ø19×1.2	2	1,20	1,50
	26	A060006-41	LOCK NUT	M14×1.5	1	18,60	23,25
	27	A050029-43	HEX SOCKET BOLT	M6×1.0X25L	2	2,70	3,38
	28	F150110-00	CHAIN GUIDE		1	183,00	228,75

SWING ARM SUB ASS'Y

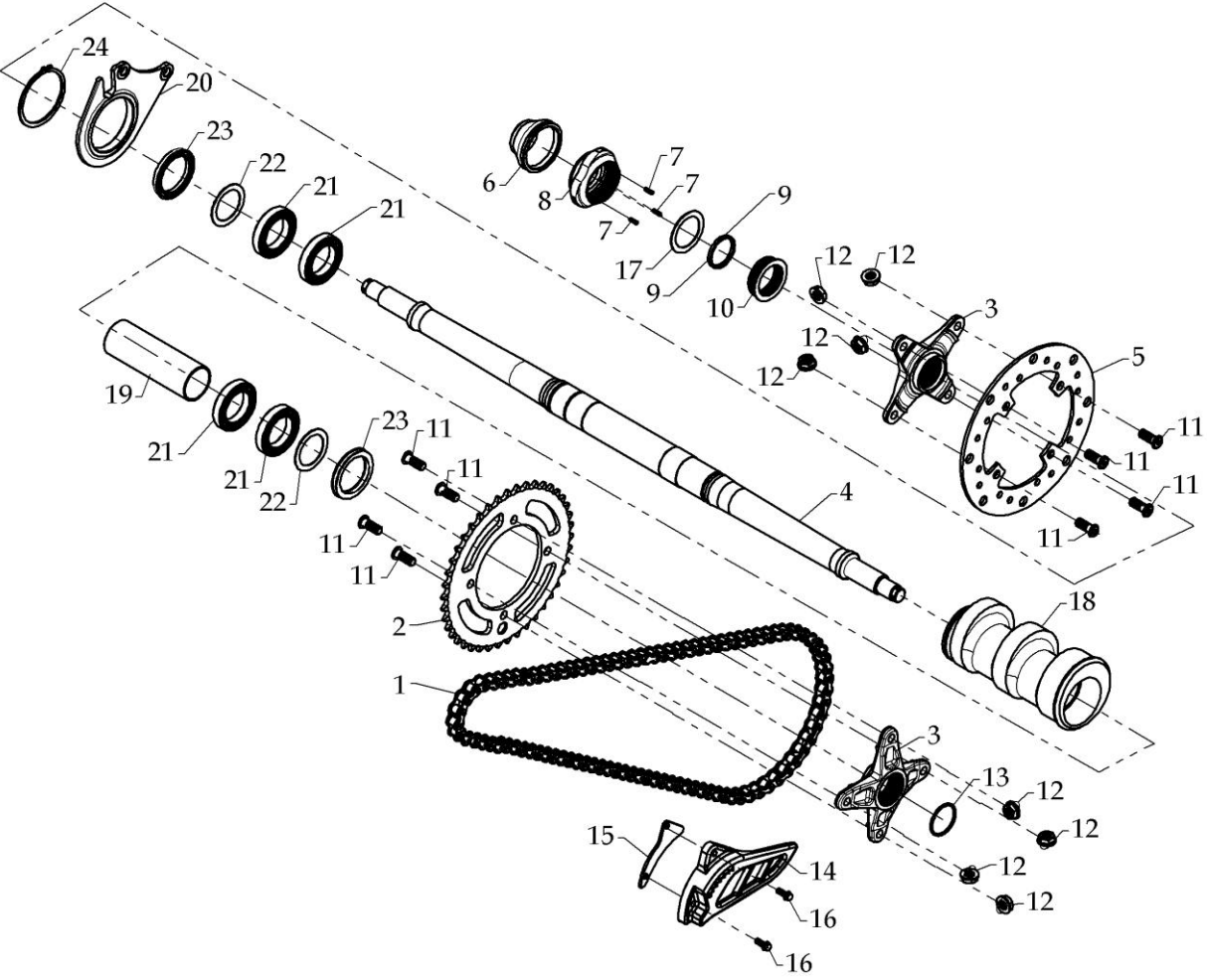


D1027-051A

**SWING ARM SUB ASS'Y**

<b>Model</b>	<b>Item</b>	<b>Part no</b>	<b>Description</b>	<b>Specification</b>	<b>Quantity</b>	<b>Excl. moms</b>	<b>Inkl. moms</b>
	29	A050084-41	HEXAGONAL FLANGE BOLT	M8×1.25×20L	4	3,60	4,50
	30	A220011-00	CLIP		1	13,80	17,25
	31	A050017-43	HEXAGONAL FLANGE BOLT	M6×1.0×12L	1	1,50	1,88
	32	A070040-45	DOWEL PIN	Ø13.5×Ø9.8	4	8,70	10,88

REAR AXLE



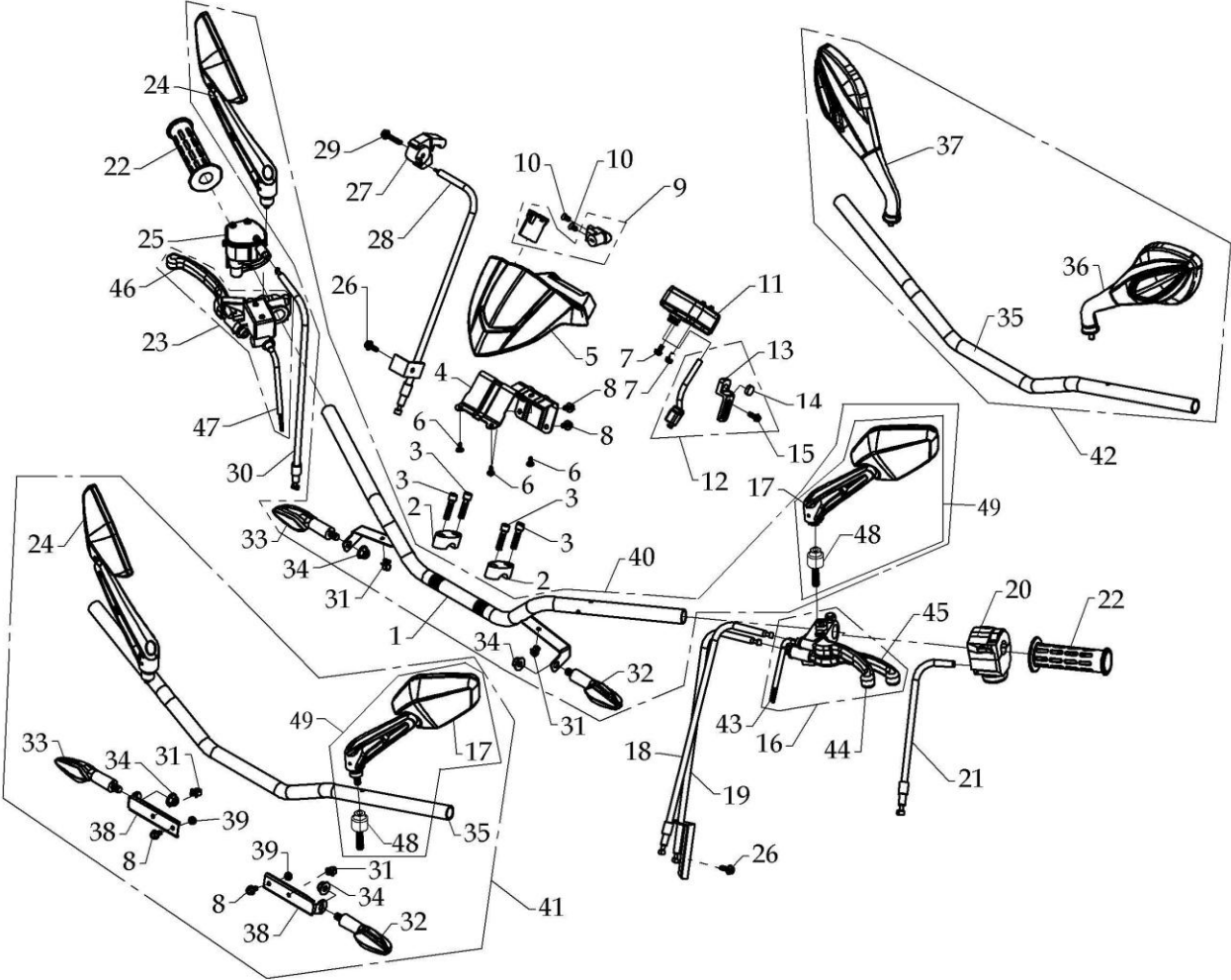
D1027-061A

**REAR AXLE**

<b>Model</b>	<b>Item</b>	<b>Part no</b>	<b>Description</b>	<b>Specification</b>	<b>Quantity</b>	<b>Excl. moms</b>	<b>Inkl. moms</b>
	01	F150041-00	DRIVE CHAIN	520-96 LINKS	1	1560,00	1950,00
	02	F150029-43	SPROCKET	42T×130	1	483,00	603,75
	03	F150030A44	HOLDER		2	176,70	220,88
	04	F150028A44	REAR AXLE		1	2004,12	2505,15
	05	F150039-01	DISK,BRAKE	Ø220	1	649,80	812,25
	06	F150033-00	PROTECT COVER		1	42,90	53,63
	07	F150034-43	HEXAGONAL SOCKET BOLT	M4×0.7×12L	3	1,20	1,50
	08	F150035-44	REGULATOR NUT		1	108,30	135,38
	09	F150036-43	REGULATOR RING		1	47,10	58,88
	10	F150037-44	REGULATOR BOLT		1	73,80	92,25
	11	A050203A41	SOCKET BOLT	M10×1.25×26L	8	7,80	9,75
	12	A060007-41	LOCK NUT	M10×1.25	8	6,00	7,50
	13	A100026-41	CIRCLIP		1	2,40	3,00
	14	F150107A00	CHAIN COVER		1	66,90	83,63
	15	F150148-00	CHAIN COVER BRACKET		1	21,00	26,25
	16	A050130-41	HEXAGONAL FLANGE BOLT	M6×1.0×16L	2	1,50	1,88
	17	F150038-41	REGULATOR WASHER		1	9,00	11,25
	18	F140144-00	ECCENTRIC		1	133,80	167,25
	19	F150025-41	SPACER		1	91,20	114,00
	20	F150254-50	CALIPER HODER		1		
	21	A010051-04	BEARING,RADIAL BALL	6908LLU,Ø40×Ø62×12t	4	360,00	450,00
	22	A040052-00	O RING	Ø36.6×Ø2.5	2	7,50	9,38
	23	A030031-00	SEAL	48×62×7 mm	2	18,00	22,50
	24	A100022-43	C TYPE CIRCLIP	Ø79.5×Ø64×2.5t	1	43,20	54,00



HANDLEBAR

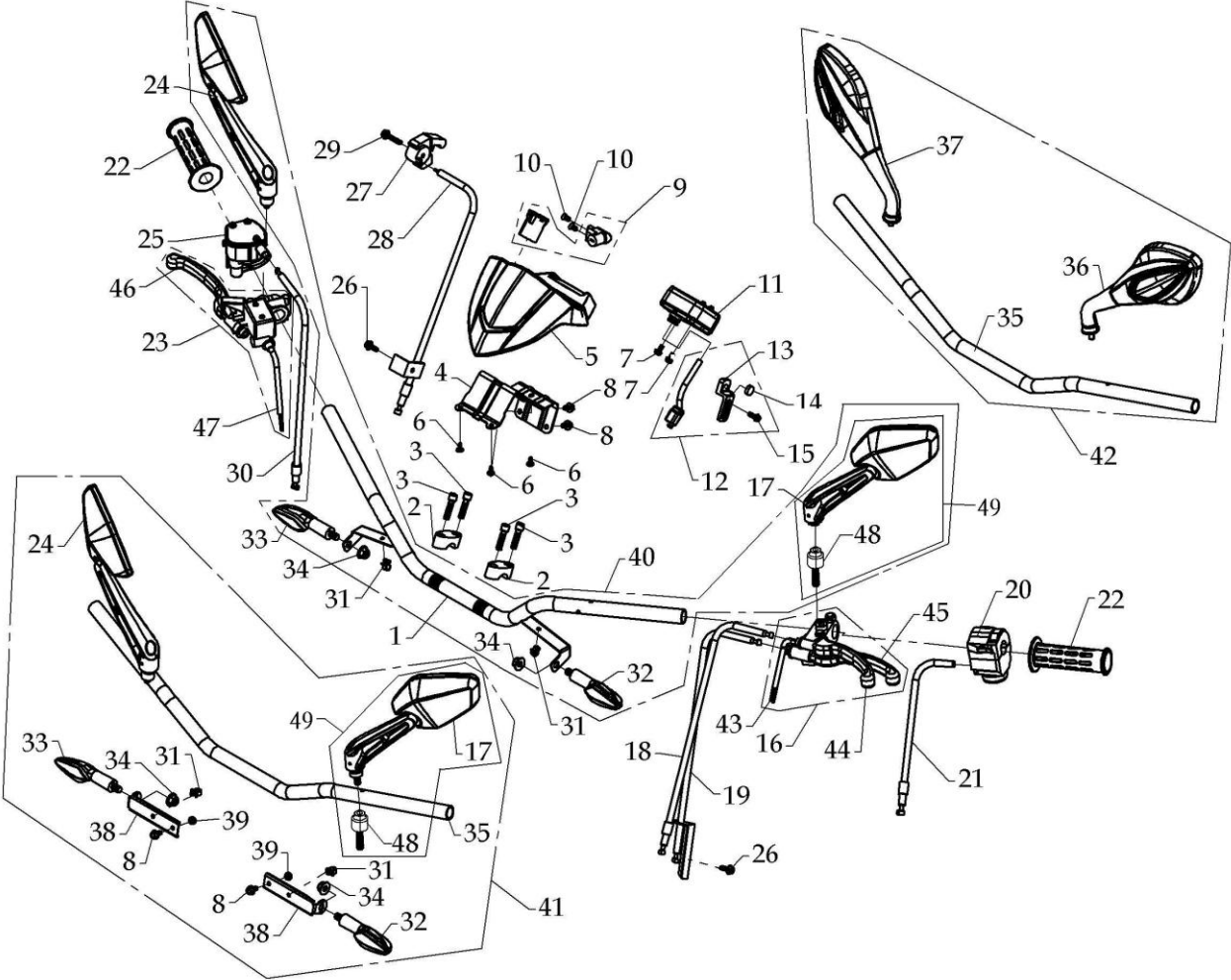


D1027-071A

**HANDLEBAR**

<b>Model</b>	<b>Item</b>	<b>Part no</b>	<b>Description</b>	<b>Specification</b>	<b>Quantity</b>	<b>Excl. moms</b>	<b>Inkl. moms</b>
	01	F140018A48	HANDLEBAR		1	352,80	441,00
	02	F150219-00	UPPER HANDLEBAR CLAMP		2	62,70	78,38
	03	A050189-41	SHCS	M8×1.25×30L	4	7,20	9,00
	04	F140042A48	BRACKET,SPEEDOMETER COVER		1	67,50	84,38
	05	F140004-98	SPEEDOMETER COVER		1	108,00	135,00
	06	A130018-43	TAPPING SCREW	5mm×12L	3	0,90	1,13
	07	A050095-41	PHILIPS SCREW & WASHER	M5×0.8×12L	2	0,60	0,75
	08	A050017-43	HEXAGONAL FLANGE BOLT	M6×1.0×12L	2	1,50	1,88
	09	F150105-00	MAIN POWER SWITCH		1	615,00	768,75
	10	A050090-41	MACHINE SCREW	M6×1.0×8L	2	1,20	1,50
	11	F150104A00	SPEEDOMETER	DINLI LOGO	1	820,80	1026,00
	12	F150103-00	SPEEDOMETER WIRE ASSY'		1	90,00	112,50
	13	F150209-00	SENSOR BRACKET		1	54,00	67,50
	14	F150211-00	MAGNET SENSOR		1	57,00	71,25
	15	A050023-41	HEXAGONAL BOLT & WASHER	M6×1.0×16L	1	3,60	4,50
	16	A190087-00	LEFT LEVER ASSY		1	432,00	540,00
	17	A160016-00	REAR-VIEW MIRROR	LEFT SIDE	2		
	18	F190062A00	PARKING BRAKE CABLE		1	120,00	150,00
	19	F150065-00	CLUTCH CABLE		1	183,60	229,50
	20	A190056-00	LEFT SWITCH ASSY'		1	630,00	787,50
	21	F150066-00	CHOKE CABLE		1	126,00	157,50
	22	F020167A00	HANDLE GRIP		2	27,00	33,75
	23	A190089-00	RIGHT LEVER ASSY	Ø14	1	432,00	540,00
	24	A160006-00	REAR-VIEW MIRROR	RIGHT SIDE	2	265,20	331,50
	25	F150161-00	THROTTLE	CE	1	570,00	712,50
	26	A050024-41	HEXAGONAL FLANGE BOLT	M6×1.0×16L	2	2,10	2,63
	27	F150068-00	REVERSE SWITCH		1	65,70	82,13
	28	F150070-00	REVERSE SWITCH CABLE		1	162,00	202,50

HANDLEBAR

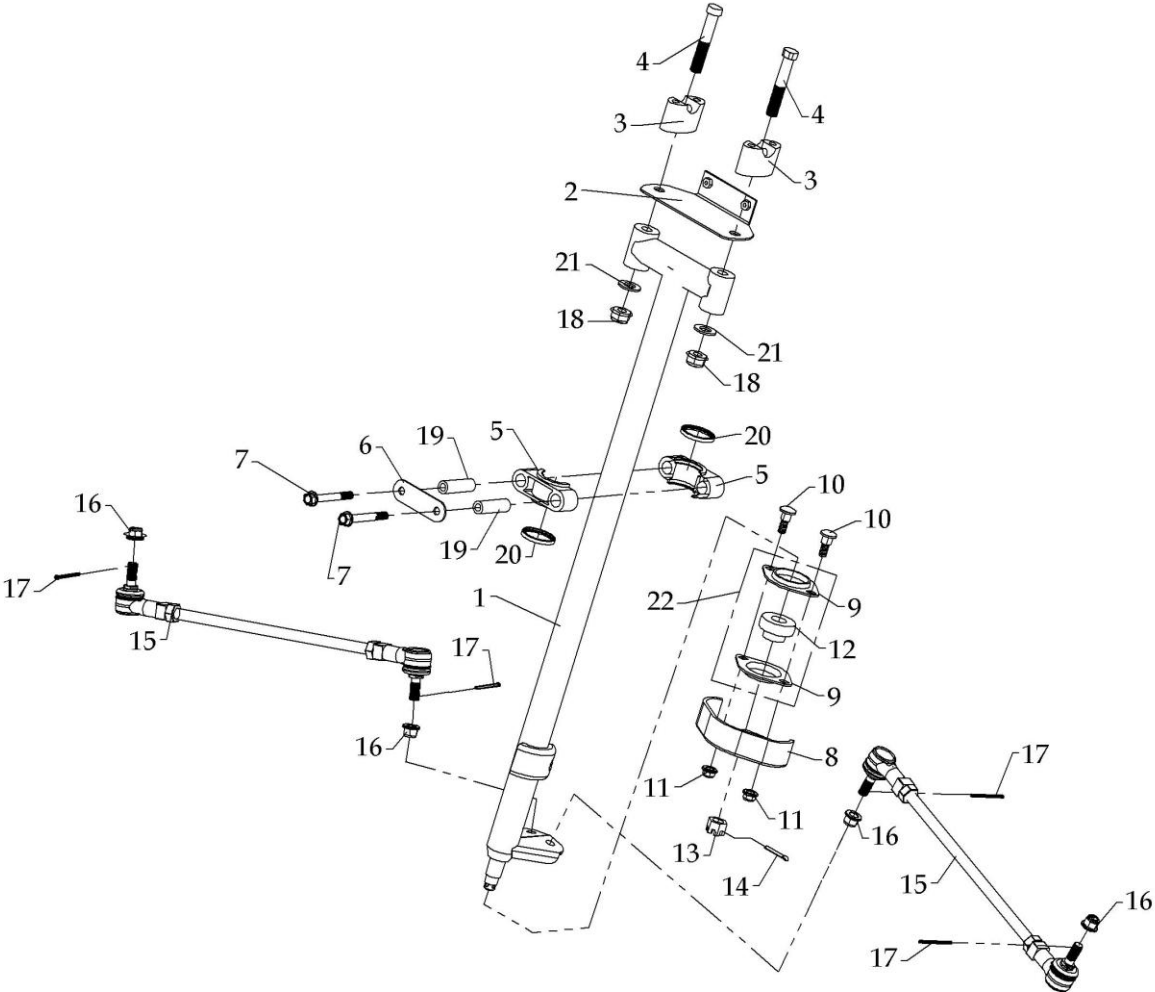


D1027-071A

**HANDLEBAR**

<b>Model</b>	<b>Item</b>	<b>Part no</b>	<b>Description</b>	<b>Specification</b>	<b>Quantity</b>	<b>Excl. moms</b>	<b>Inkl. moms</b>
	29	A050134-41	HEXAGONAL FLANGE BOLT	M6×1.0×32L	1	2,70	3,38
	30	F150063-00	THROTTLE CABLE		1	144,00	180,00
	31	F020578-15	CLIP	RH-8	4	2,40	3,00
	32	A180079-00	DIRECTIONAL SIGNAL	(FL/RR)	2	510,00	637,50
	33	A180078-00	DIRECTIONAL SIGNAL	(FR/RL)	2	510,00	637,50
	34	A060010-41	HEXAGONAL FLANGE NUT	M10x1.25	4	2,10	2,63
	35	F150067A50	HANDLEBAR		2	321,00	401,25
	36	A180059-00	REAR-VIEW MIRROR	L=15mm	1	474,12	592,65
	37	A180060-00	REAR-VIEW MIRROR	L=15mm	1	474,12	592,65
	38	F150234-50	BRACKET,DIRECTIONAL		2	27,00	33,75
	39	A060053-41	LOCK NUT	M6×1.0	2	3,90	4,88
	40	F150235-01	DIRECTIONAL STYLE 1		1	1035,90	1294,88
	41	F150235-02	DIRECTIONAL STYLE 2		1	1010,34	1262,93
	41	F150235-04	DIRECTIONAL STYLE 4		1		
	42	F150235-03	DIRECTIONAL STYLE 3		1	1262,70	1578,38
	43	A190121-00	CLUTCH SENSOR		1	210,00	262,50
	44	A190096-00	MANUAL LEVER		1	114,00	142,50
	45	A190097-00	MANUAL LEVER		1	111,00	138,75
	46	F020268-00	MANUAL LEVER		1	65,70	82,13
	47	A190029-00	LIMIT SWITCH		1	38,40	48,00
	48	F150255-00	REAR-VIEW MIRROR PARTS		2		
	49	A160017-00	REAR-VIEW MIRROR ASSY		1		

STEERING

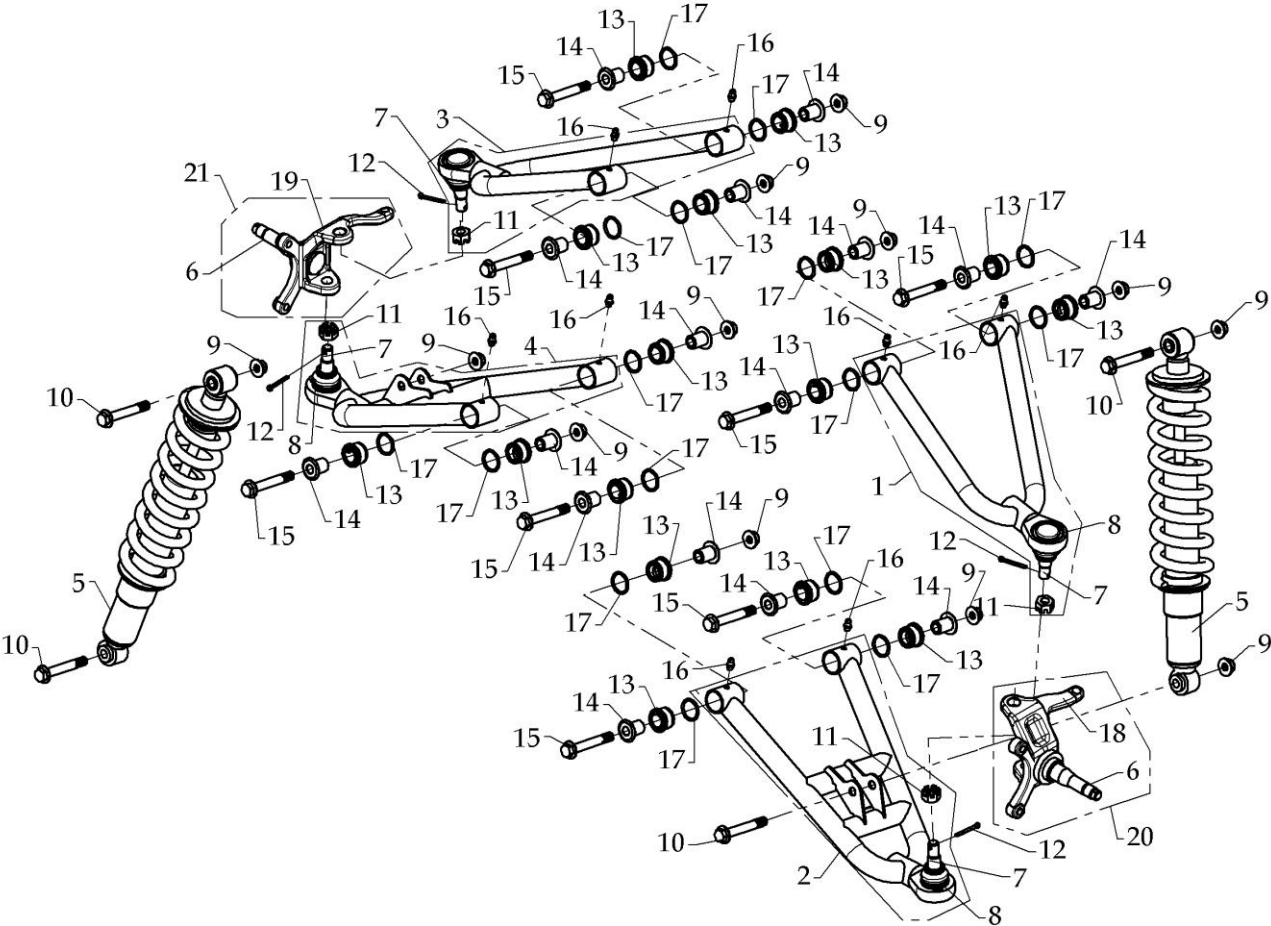


D1027-081A

**STEERING**

<b>Model</b>	<b>Item</b>	<b>Part no</b>	<b>Description</b>	<b>Specification</b>	<b>Quantity</b>	<b>Excl. moms</b>	<b>Inkl. moms</b>
	01	F150047D48	STEERING		1	511,20	639,00
	02	F150164A50	BRACKET,SPEEDOMETER COVER		1	42,90	53,63
	03	F150220-00	LOWER HANDLEBAR CLAMP		2	108,30	135,38
	04	A050228-41	LOCATION BOLT	M12×1.75×70L	2	3,00	3,75
	05	F140019-00	STEERING CLAMP		2	37,20	46,50
	06	F140082-41	FIXED PLATE		1	9,30	11,63
	07	A050010-41	HEXAGONAL FLANGE BOLT	M8×1.25×65L	2	12,90	16,13
	08	F150152A48	CHANGE DIRECTION LIMIT		1	114,00	142,50
	09	F150049-41	BEARING HOLDING		2	85,50	106,88
	10	A050212-41	FLANGE-HEAD BOLT	M8×1.25×25L	2	8,40	10,50
	11	A060014-41	LOCK NUT	M8×1.25	2	3,90	4,88
	12	A010053-00	BEARING	SB203-17	1	171,00	213,75
	13	A060026B42	CADTLE NUT	M14 ×1.5-II	1	8,40	10,50
	14	A070002-41	COTTER PIN	Ø3.2×32L	1	0,90	1,13
	15	F150206-00	STEERING TIE-ROD ASSY.		2	465,00	581,25
	16	A060007-41	LOCK NUT	M10×1.25	4	6,00	7,50
	17	A070038-00	COTTER PIN	Ø1.8×Ø10	4	1,50	1,88
	18	A060072-41	HEXAGONAL FLANGE NUT	M12×1.75	2	5,70	7,13
	19	F140145-42	SPACER		2	14,70	18,38
	20	A030034-00	SEAL COVER		2	5,70	7,13
	21	A080106-41	WASHER	Ø13.2×Ø25×2t	2	62,70	78,38
	22	F150048-41	BEARING HOLDING ASSY		1	270,00	337,50

FRONT SUSPENSIONEN



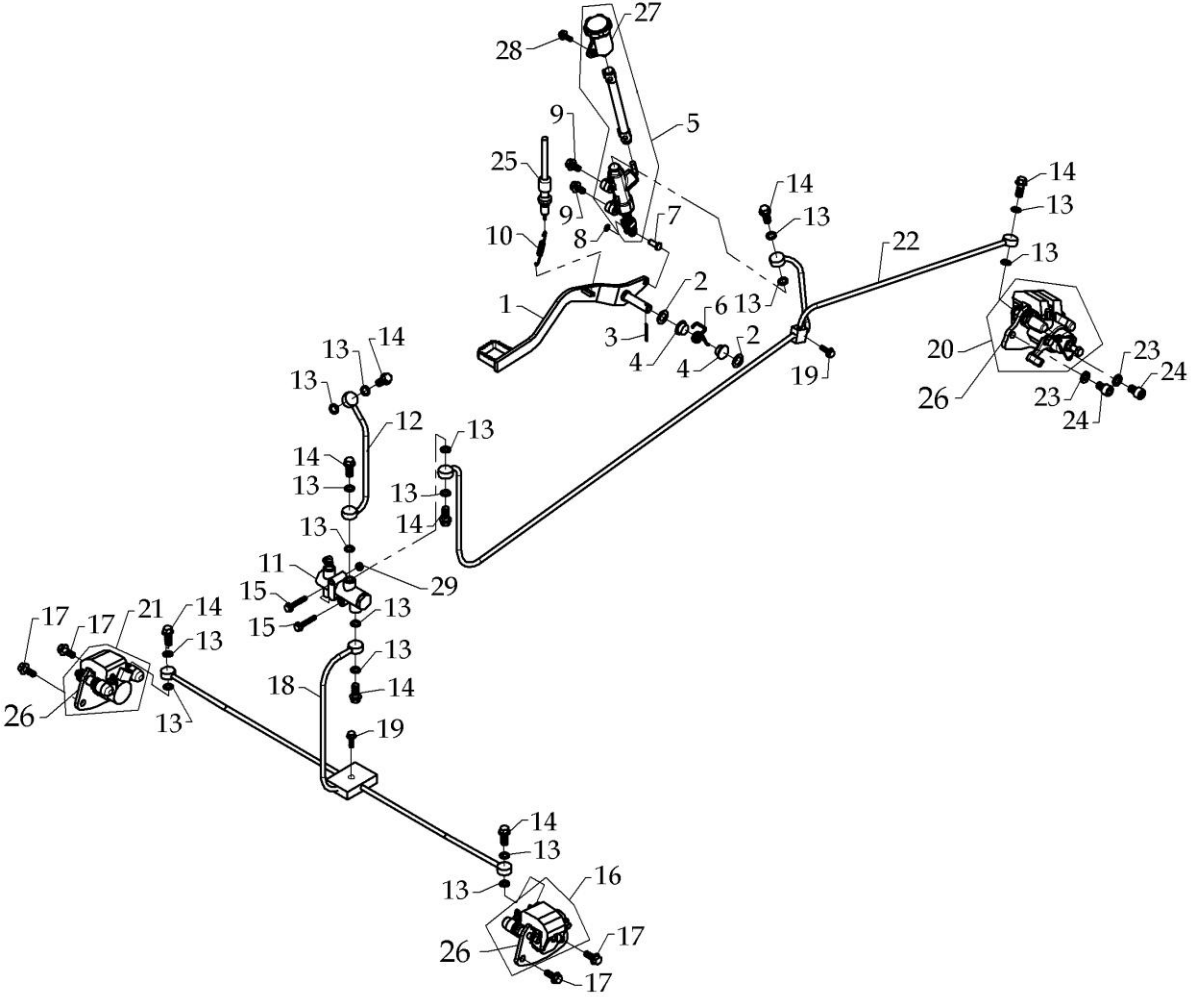
D1027-091A

## FRONT SUSPENSIONEN

Model	Item	Part no	Description	Specification	Quantity	Excl. moms	Inkl. moms
	01	F150014-48	UPPER-LEFT A-ARM		1	780,00	975,00
	02	F150012-48	LOWER-LEFT A-ARM		1	622,80	778,50
	03	F150015-48	UPPER-RIGHT A-ARM		1	468,00	585,00
	04	F150013-48	LOWER-RIGHT A-ARM		1	1038,00	1297,50
	05	F150042-00	SUSPENSIONE		2	957,60	1197,00
	06	F150023A46	KNUCKLE,STEERING		2	384,00	480,00
	07	F140227-00	BALL JOINT		4	207,00	258,75
	08	A100021-42	CIRCLIP	Ø30mm	4	9,00	11,25
	09	A060007-41	LOCK NUT	M10×1.25	12	6,00	7,50
	10	A050213-41	HEXAGONAL FLANGE BOLT	M10×1.25×50L-8T	4	10,20	12,75
	11	A060068-41	CASTLE NUT	M12×1.25	4	9,00	11,25
	12	A070002-41	COTTER PIN	Ø3.2×32L	4	0,90	1,13
	13	A090031A00	INTERNAL BUSH		16	21,00	26,25
	14	A090032A43	EXTERIOR BUSH		16	26,10	32,63
	15	A050185-41	HEXAGONAL FLANGE BOLT	M10×1.25×70L	8	15,60	19,50
	16	F020140-00	GREASE VALVE		8	8,10	10,13
	17	A040040-00	O RING	P22(Ø2.4×Ø21.8)	16	3,30	4,13
	18	F150021A42	LEFT KNUCKLE		1		
	19	F150022A42	RIGHT KNUCKLE		1		
	20	F150019A46	LEFT KNUCKLE ASSY		1	612,00	765,00
	21	F150020A46	RIGHT KNUCKLE ASSY		1	612,00	765,00



**BRAKE SYSTEM**

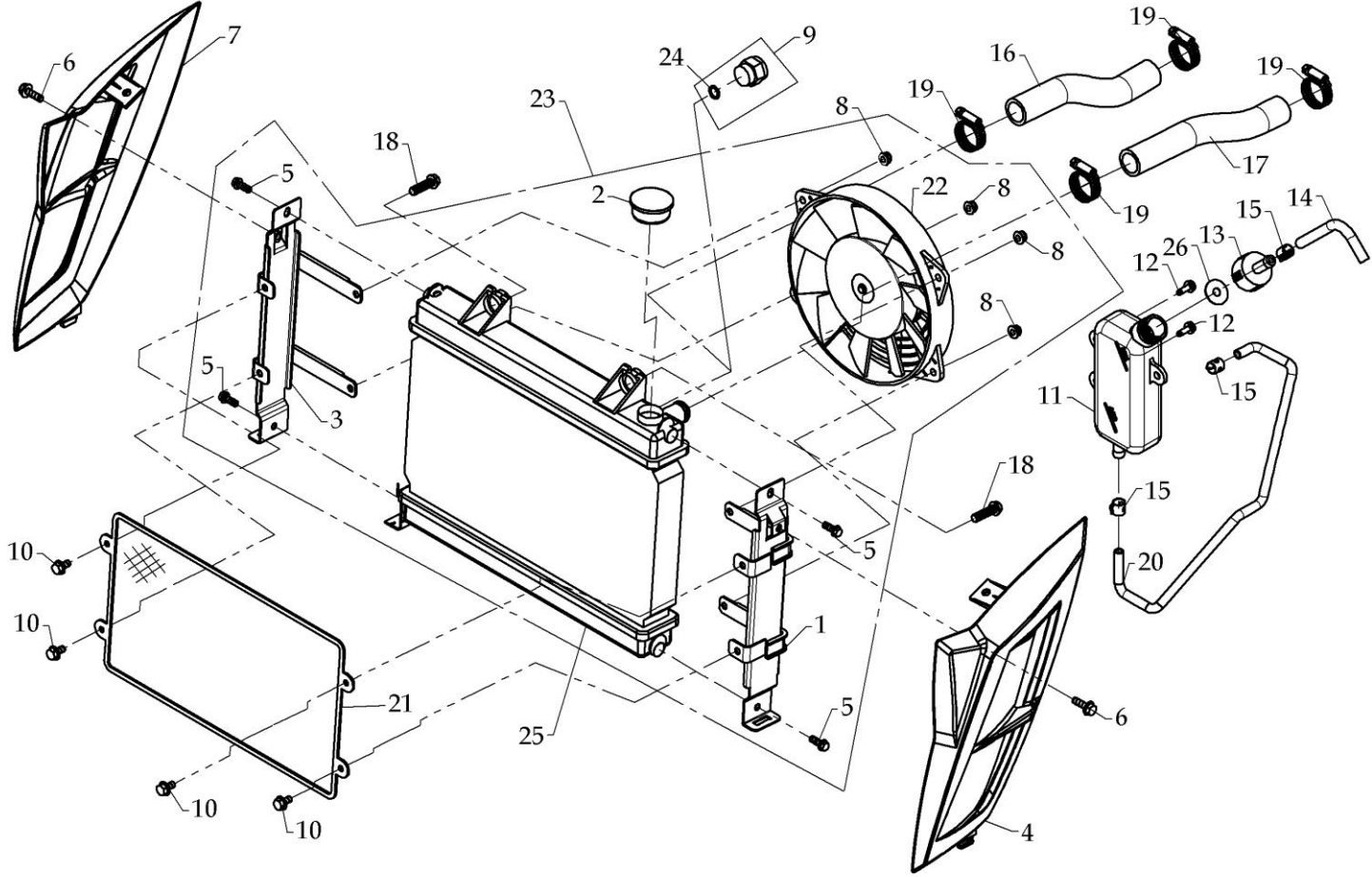


D1027-101A

## BRAKE SYSTEM

Model	Item	Part no	Description	Specification	Quantity	Excl. moms	Inkl. moms
	01	F150044B48	BRAKE PEDAL		1	237,00	296,25
	02	A080086-41	WASHER	Ø13×Ø22×0.8t	2	2,10	2,63
	03	A070011-41	COTTER PIN	Ø2.8×32L	1	0,90	1,13
	04	F150046-00	BUSH		2	13,50	16,88
	05	F150158-02	BRAKE CYLINDER ASSY	460mm	1	705,00	881,25
	06	A110035-42	TORSION SPRING		1	8,40	10,50
	07	A070021-42	PIN	Ø7×15	1	11,10	13,88
	08	A100016-43	E CLIP	Ø5	1	0,30	0,38
	09	A050049-41	HEXAGONAL FLANGE BOLT	M8×1.25×16L	2	2,40	3,00
	10	A110034-00	SPRING,BRAKE SENSOR		1	7,80	9,75
	11	A220015-00	DISTRIBUTION CYLINDER	Ø14	1	408,00	510,00
	12	F150200-01	BRAKING HOSE		1	540,00	675,00
	13	A080011-00	PLAIN WASHER	Ø10.3×Ø15×1.5	16	3,00	3,75
	14	A050009-44	HEXAGONAL FLANGE BOLT	M10×1.25×22L	8	8,70	10,88
	15	A050069-41	BOLT, FLANGE	M6×1.0×40L	2	3,60	4,50
	16	F150010-00	CALIPER,LEFT		1	607,14	758,93
	17	A050197-41	HEXAGONAL FLANGE BOLT	M8×1.0×21L	4	5,40	6,75
	18	F190056-01	DISTRIBUTION,THREE-WAY		1	666,00	832,50
	19	A050030-43	HEXAGONAL FLANGE BOLT	M6×1.0×20L	2	3,90	4,88
	20	F190059-00	REAR CALIPER		1	1845,00	2306,25
	21	F150011-00	CALIPER,RIGHT		1	607,14	758,93
	22	F190058A01	DISTRIBUTION,THREE-WAY		1		
	23	A080082-41	PLAIN WASHER	Ø10.5×Ø18×2.0t	2	2,10	2,63
	24	A050216-41	SOCKET BOLT	M10×1.25×15L-8T	2	6,60	8,25
	25	A190054-00	BRAKE SENSOR		1	66,00	82,50
	26	F140239-00	PAD ,DISK BRAKE		3	204,00	255,00
	27	A160008-00	BROKE RESERVOIR		1	105,00	131,25
	28	A050024-41	HEXAGONAL FLANGE BOLT	M6×1.0×16L	1	2,10	2,63
	29	A060053-41	INSERT LOCK NUT	M6×1.0	1	3,90	4,88

COOLING SYSTEM

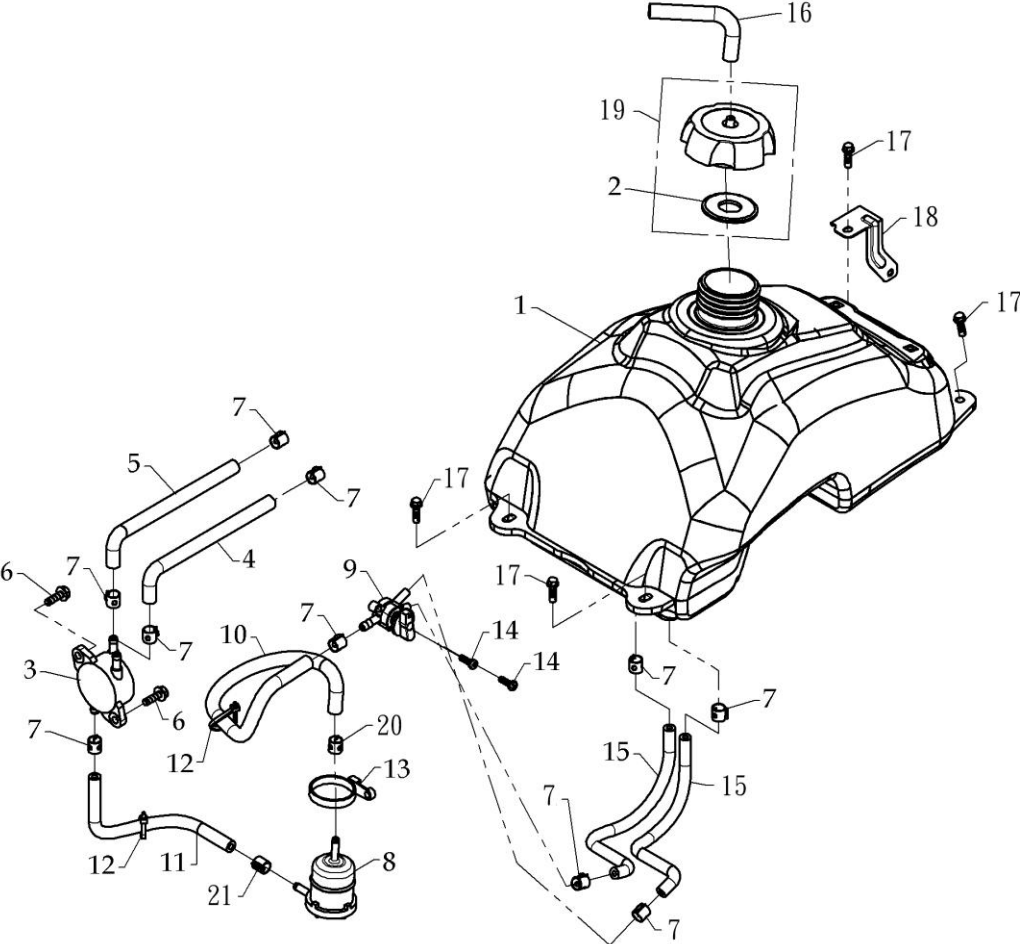


D1027-111A

**COOLING SYSTEM**

<b>Model</b>	<b>Item</b>	<b>Part no</b>	<b>Description</b>	<b>Specification</b>	<b>Quantity</b>	<b>Excl. moms</b>	<b>Inkl. moms</b>
	01	F150188-50	LEFT COVER BRACKET		1	168,00	210,00
	02	F150059-00	PRESSURE CAP		1	90,00	112,50
	03	F150189-50	RIGHT COVER BRACKET		1	168,00	210,00
	04	F150098-98	LEFT COVER,PROTECT		1	108,00	135,00
	05	A050023-41	HEX BOLT	M6×1.0×16L	4	3,60	4,50
	06	A050030-43	HEXAGONAL FLANGE BOLT	M6×1.0×20L	2	3,90	4,88
	07	F150099-98	RIGHT COVER,PROTECT		1	108,00	135,00
	08	A060053-41	INSERT LOCK NUT	M6×1.0	4	3,90	4,88
	09	A190099-00	COOLING SENCER	80°C ON×70°C OFF	1	168,00	210,00
	10	A050017-43	HEXAGONAL FLANGE BOLT	M6×1.0×12L	4	1,50	1,88
	11	F140080-00	COOLANT RESERVOIR		1	99,90	124,88
	12	A050156-43	PANHEAD SCREW & WASHER	M6×1.0×16L	2	3,60	4,50
	13	F140087A15	RESERVOIR CAP		1	28,50	35,63
	14	F020145-00	HOSE	L=190MM	1	11,70	14,63
	15	A220010-00	FUEL TUBE	Ø11×8×0.7t	3	3,60	4,50
	16	F150118-00	COOLANT HOSE	Ø12×Ø19×170	1	114,00	142,50
	17	F150058-00	COOLANT HOSE	Ø12×Ø19×215	1	147,00	183,75
	18	A050186-41	HEXAGONAL FLANGE BOLT	M8×1.25×28L	2	12,60	15,75
	19	F150146-00	CLAMP	Ø30~Ø40	4	13,80	17,25
	20	A220035-00	HOSE	Ø7×Ø11×520L	1	24,00	30,00
	21	F150185-50	RADIATOR PROTECTOR		1	171,00	213,75
	22	F170070-00	FAN ASSY		1	711,00	888,75
	23	F150167B00	RADIATOR ASSY		1	3444,00	4305,00
	24	A040041-00	O RING	P10-Ø1.9×Ø9.8	1	3,00	3,75
	25	F150057A00	COOLER		1	1791,00	2238,75
	26	F140223-00	WATER TANK RUBBER		1	3,00	3,75

FUEL TANK

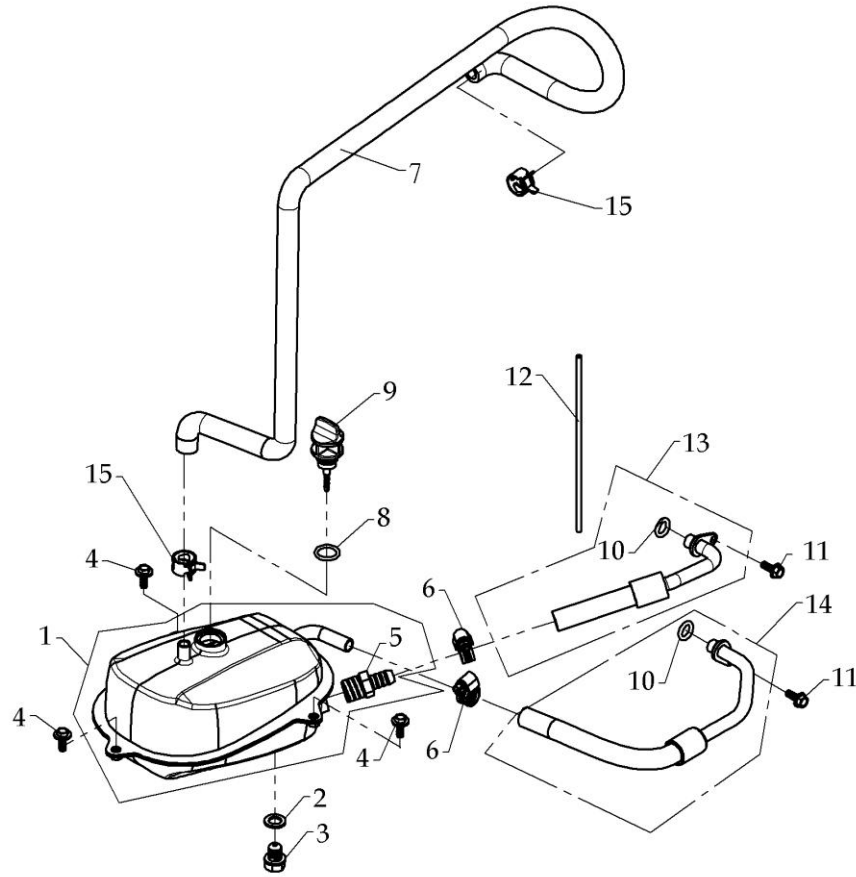


D1027-121A

## FUEL TANK

Model	Item	Part no	Description	Specification	Quantity	Excl. moms	Inkl. moms
	01	F150212-00	FULE TANK		1	570,00	712,50
	02	F140229-00	GASKET		1	0,60	0,75
	03	290-62201-00	FUEL PUMP ASSY		1	441,00	551,25
	04	F150114-00	TUBE	Ø6×Ø13×640	1	138,00	172,50
	05	F150117-00	TUBE	Ø5×Ø13	1	204,00	255,00
	06	A050030-43	HEXAGONAL FLANGE BOLT	M6×1.0×20L	2	3,90	4,88
	07	F020196-00	FUEL TUBE	12×0.8	10	3,30	4,13
	08	F150223-00	FUEL FILTER ASSEMBLY		1	84,00	105,00
	09	A240003-00	FUEL VALVE		1	195,00	243,75
	10	A220038-00	TUBE	Ø5.5×Ø10.5	1	24,00	30,00
	11	A220026-00	TUBE		1	37,20	46,50
	12	F020188-00	STRAP	204L×3.6W	2	0,90	1,13
	13	A160007-00	STRAP	TCV-400	1	11,10	13,88
	14	A050031-41	PAN HEAD BOLT	M5×0.8×16L	2	2,70	3,38
	15	A220039-00	TUBE	Ø8×Ø13X270L	2	20,40	25,50
	16	F020145-00	BREATHE TUBE	L=190L	1	11,70	14,63
	17	A050063-41	HEX BOLT	M6×1.0×20L	4	2,70	3,38
	18	F150214-48	BRACKET		1	19,50	24,38
	19	F140300-98	FUEL TANK CAP		1		0,00
	20	F020197-00	FUEL TUBE	9.2×0.6	1	2,70	3,38
	21	A220010-00	FUEL TUBE	Ø11×8×0.7t	1	3,60	4,50

# OIL TANK



D1027-131A

**OIL TANK**

<b>Model</b>	<b>Item</b>	<b>Part no</b>	<b>Description</b>	<b>Specification</b>	<b>Quantity</b>	<b>Excl. moms</b>	<b>Inkl. moms</b>
	01	F150054-50	OIL TANK		1	711,00	888,75
	02	A080052-00	PLAIN WASHER	Ø12.2×Ø20×2.0	1	3,90	4,88
	03	A050071-41	DRAINAGE PLUG	M12×1.5×15L	1	12,90	16,13
	04	A050022-41	HEX BOLT	M6×1.0×18L	3	2,70	3,38
	05	F150056-00	OIL FILTER	#40	1	54,00	67,50
	06	F150127-41	TUBE CLIP		2	7,80	9,75
	07	F150135B00	TUBE	Ø12×Ø20×1230L	1	354,00	442,50
	08	A040020-00	O RING	18×3	1	2,70	3,38
	09	F150247A00	OIL LEVEL GAUGE		1	15,00	18,75
	10	A040027-00	O RING		2	14,40	18,00
	11	A050024-41	HEXAGONAL FLANGE BOLT	M6×1.0×16L	2	2,10	2,63
	12	F150116-00	TUBE	Ø6×Ø10×350	1	40,50	50,63
	13	F150136-01	OIL TUBE	Ø12×Ø19	1	454,68	568,35
	14	F150213-00	OIL TUBE	Ø12×Ø19	1	193,80	242,25
	15	A220020-41	TUBE CLIP	Ø17×12×1.0t	2	4,20	5,25





**WHEEL**

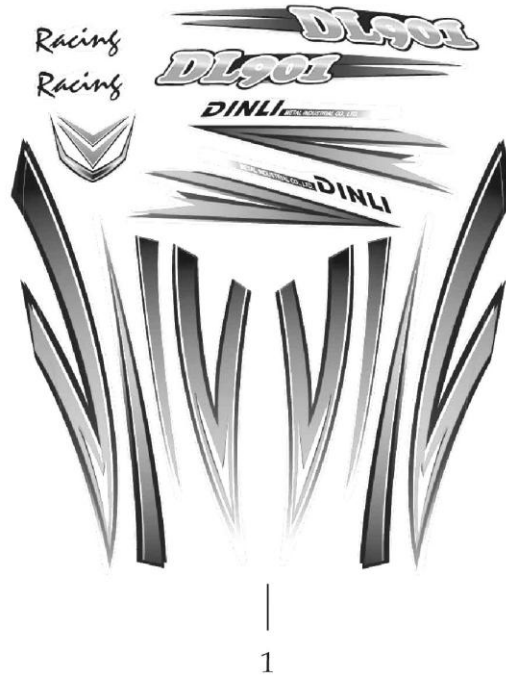
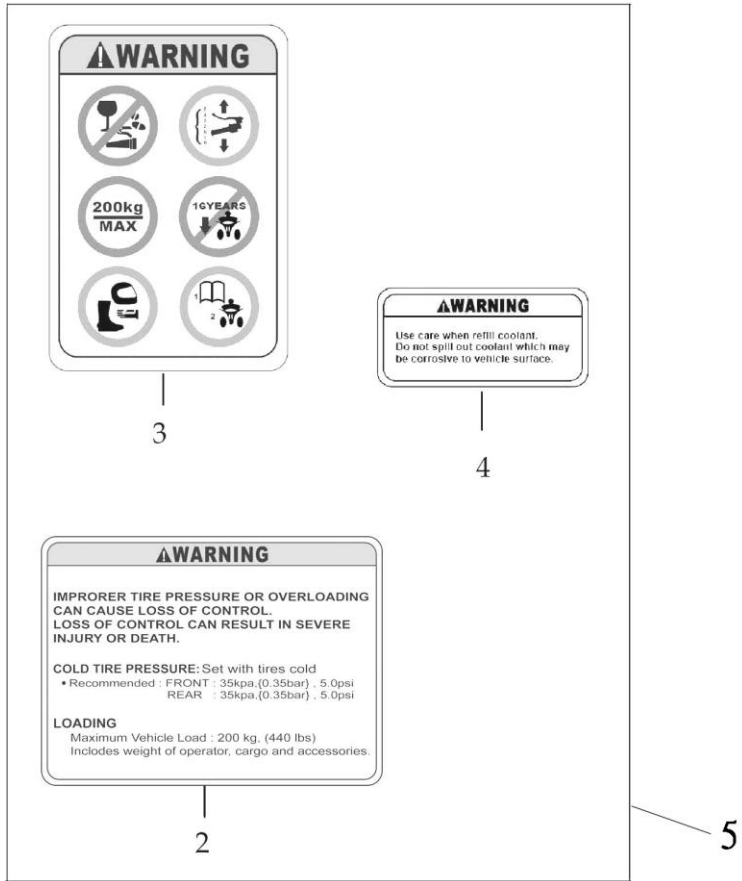
<b>Model</b>	<b>Item</b>	<b>Part no</b>	<b>Description</b>	<b>Specification</b>	<b>Quantity</b>	<b>Excl. moms</b>	<b>Inkl. moms</b>
	01	F150006-53	SHAFT CONNECTER		2	672,60	840,75
	02	F150002-98	RIM	9×8,5	2		
	03	F150009-01	TIRE	20X11-9"	2	987,00	1233,75
	04	A060058-42	CADTLE NUT	M20×p1.5	2	30,60	38,25
	05	A070031-41	COTTER PIN	Ø3.5×45L	2	1,20	1,50
	06	A080091-41	PLAIN WASHER	Ø21×Ø34×4t	2	10,20	12,75
	07	A080092-41	PLAIN WASHER	Ø20.2×Ø40×2.5t	2	9,60	12,00
	08	A050208-41	BOLT	M10×1.25×40L	16	8,10	10,13
	09	A060061-41	LOCK NUT	M10×1.25	16	9,60	12,00
	10	F150032-44	SPACER		2	38,40	48,00
	11	F020153-00	RUBBER CAP		4	15,60	19,50
	12	F020154-00	RIM VALVE		4	11,40	14,25
	13	A090027-45	SPACER	Ø15×Ø20×10.5t	2	11,40	14,25
	14	F150001-98	RIM	10×5.5	2		
	15	F020478-42	SEAT, RUBBER CAP		2	22,80	28,50
	16	A070002-41	COTTER PIN	Ø3.2×32L	2	0,90	1,13
	17	F150005A53	SHAFT CONNECTER		2	397,80	497,25
	18	F150008-01	FRONT WHEEL	21×7-10"	2	702,00	877,50
	19	A030016-00	SEAL	TC 20×35×7	2	10,20	12,75
	20	A010025-04	SEALED BEARING	6004LLU	2	72,60	90,75
	21	A050183-41	FHSC	M8×1.25×17L	8	11,40	14,25
	22	F150003A00	DISK,BRAKE		2	424,80	531,00
	23	F150004-41	SPACER		2	27,90	34,88
	24	A030029-00	SEAL	TC 28×42×7t	2	13,50	16,88
	25	A010021-04	BEARING	6202LLU	2	55,20	69,00
	26	A060004-42	CASTLE NUT	M14×1.5-II	2	12,60	15,75



**ELECTRIC SYSTEM**

<b>Model</b>	<b>Item</b>	<b>Part no</b>	<b>Description</b>	<b>Specification</b>	<b>Quantity</b>	<b>Excl. moms</b>	<b>Inkl. moms</b>
	01	A190061-00	STARTER RELAY		1	288,00	360,00
	02	F170042-50	BRACKET, STARTER RELAY		1	27,00	33,75
	03	A050043-41	PANHEAD SCREW	M6×1.0×12L	1	0,60	0,75
	04	A180066-00	RELAY CONNECTOR CABLE		1	21,00	26,25
	05	A190092-00	FLASH RELAY	LED	1	186,00	232,50
	06	A190133-00	HORN		1	513,00	641,25
	07	A050024-41	HEXAGONAL FLANGE BOLT	M6×1.0×16L	11	2,10	2,63
	08		IGNITION COIL	see engine parts manual	1		
	09		CDI	see engine parts manual	1		
	10	A190088-00	REGULATION	270W	1	612,00	765,00
	11	A190062-00	BATTERY	14Ah	1	1362,00	1702,50
	12	A180079-00	DIRECTIONAL SIGNAL	(FL/RR)	1	510,00	637,50
	13	A180078-00	DIRECTIONAL SIGNAL	(FR/RL)	1	510,00	637,50
	14	A060010-41	HEXAGONAL FLANGE NUT	M10×1.25	2	2,10	2,63
	15	A180080A00	HEADLIGHT		1	519,84	649,80
	16	F150204-50	HEADLIGHT BRACKET, UP		2	43,20	54,00
	17	F150205-50	HEADLIGHT BRACKET, DOWN		2	43,20	54,00
	18	A130018-43	TAPPING SCREW	5mm×12L	4	0,90	1,13
	19	F150102A00	MAIN CABLE ASSY'		1	930,00	1162,50
	20	F030044-00	TAILLIGHT	CE	1	405,00	506,25
	21	A130003-00	TAPPING SCREW	4mm×10L	4	0,60	0,75
	22	F150155-00	TOOL KIT		1	135,00	168,75
	23	A930004-00	RUBBER STRIP		1	19,50	24,38
	24	A180049-00	BULB	12V-5W,CE	1	24,00	30,00
	25	A180055-00	BULB	12V-35/35W HIS(E-Mark)	1	240,00	300,00
	26	A180053-00	BULB	P21/5W(E-Mark)	1	28,80	36,00
	27	F150238-00	LEAD,STARTER MOTOR		1		
	28	F150239-00	WIRE,NOGETIVE POLE		1		
	29	F040097-00	JACKET		1	11,10	13,88
	30	A930005-00	STRAP	120×200	1	18,60	23,25

# STICKERS

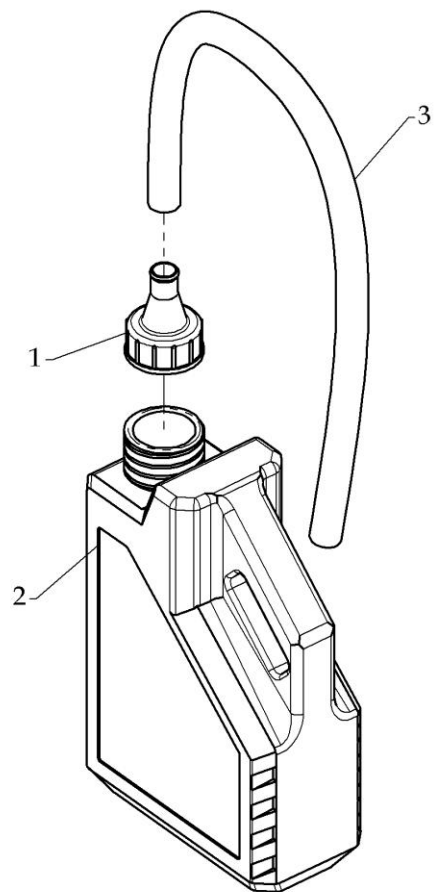


D1027-161A

**STICKERS**

<b>Model</b>	<b>Item</b>	<b>Part no</b>	<b>Description</b>	<b>Specification</b>	<b>Quantity</b>	<b>Excl. moms</b>	<b>Inkl. moms</b>
	01	A990228-98	STYLING STICKERS		1	124,80	156,00
	02	A990234-00	STICKER, TIRE PRESSURE		1	2,70	3,38
	03	A990214-00	STICKER, WARNING SIGN		1	5,40	6,75
	04	A990210-00	STICKER, RESERVOIR		1	1,20	1,50
	05	A990261-98	WARNING LABELS		1		

# COOLING WATER



D1027-171A

**COOLING WATER**

<b>Model</b>	<b>Item</b>	<b>Part no</b>	<b>Description</b>	<b>Specification</b>	<b>Quantity</b>	<b>Excl. moms</b>	<b>Inkl. moms</b>
	01	F140262-00	TULL CAP		1	52,80	66,00
	02	F150203-00	COOLANT(BOTTLED)	2L	2	137,70	172,13
	03	F140264-00	TUBE	Ø15xØ18x680L	1	31,50	39,38